



DIY OUTDOOR SECTIONAL

Libby Burns | [@burnsfamilyacres](https://www.instagram.com/burnsfamilyacres)

PROJECT PLAN

Finished Dimensions: Varies based on Desired Size / 80in x 52in

Skill Level: Beginner

Materials

Item	Qty
2 x 4 x 105"	10
1 x 4 x 8	8
2 x 2 x 8	3
4 x 4 x 8	1
Shiplap 8'	10
2" Screws	50+
Exterior Paint	1 qt.
Furring Strips 8'	2
Caulk	1

* Board dimensions are "nominal." Actual dimensions are smaller due to lumber industry standards. Cuts are actual length.

Tools Used



Miter Saw



Brushless Drill



Orbital Sander

Paint Sprayer

Battery Tip: A 4.0Ah battery is recommended to be paired with high amp draw tools for maximum efficiency.

Assembly Instructions

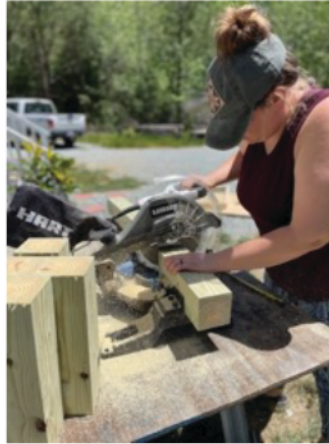
Step 1

Measure crib mattress for each platform size and orientation you desire. Create rectangular base with 2x4 to those measurements. Make two for each mattress.



Step 2

Cut 4x4 to desired seat height (we did 12in) and secure each 4x4 post to each corner of the 2 main rectangular bases. Then flip base over and secure second rectangular base to other end of 4x4.



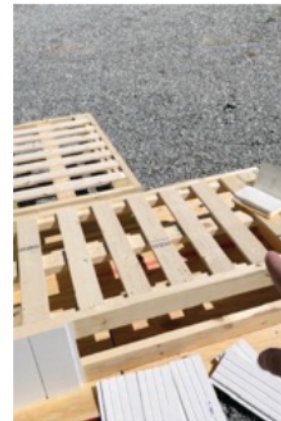
Step 3

Cut 2x2 to length of inner distance between the 4x4 on each long side. Then secure these approximately 1/2in below top of base edge (so your 1x4 sits flush with the 2x4 base).



Step 4

Cut 1x4 to length of short side of each base, these are your slats for the mattress. We spaced them 3in apart, but can use any spacing you like. We also added a 2x4 to run the length of each base that sits under the 1x4 for extra support (this is optional).



Step 5

Cut shiplap to height of base, ours was 12in. Nail shiplap all around base (into the 2x4 on top and bottom) with brad nailer. Cut furring strip to cover top of shiplap along each base (measurements will vary).

Step 6

Once your bases are assembled, you can add your backing and arm rests. We cut five 2x4 to 32in and secured to back of each base (one short side and one long side for orientation of our sectional). On the short side, secure to both edges. On long side, secure on edges and one equal distance between two for added support.



Step 7

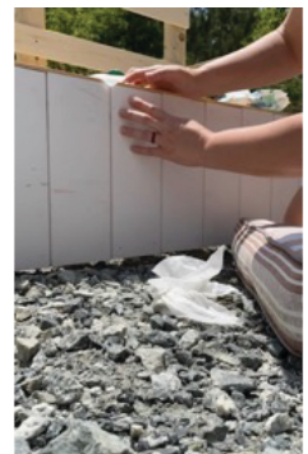
Cut four additional 2x4 to height you'd like the arm rest, ours was 24in. Secure two of these on each side of the sectional where you would like an arm rest. Then secure the other two adjacent to the back support 2x4, and along the side you placed the first 2x4 arm rest board. Then cut 1x4 to the length of the distance between the two arm rest board and add length for some overhang. Secure these boards to the top of each 2x4 on the side (we used brad nails here). Do same for other side of sectional where you have arm rest.



Step 8

Add 1x4 back support boards. Measure 3 boards to span the short side back (base one) and the long back (base two). Secure boards at top, bottom and middle of the back.

Fill in all nail holes with caulk and remove excess.



Step 9

Sand arm rests and back with orbital sander for a smooth finish



Step 10

Paint or stain your sectional. We used a paint sprayer with exterior grade paint.

Step 11

Bring sectional to final location for assembly. Optional: Drill two holes where you plan to connect your bases along top edge of base. Use bolt, washer and knut to secure bases together and allow for disassembly if needed.