

# HART™



## Collapsible Tailgate Serving Station by @lifeonsummerlin

# PROJECT PLAN

**Finished Dimensions:** Varies based on Desired Size

**Skill Level:** Beginner

## Materials

Item	Qty
1x10x8	2
1x12x8	1

\* Board Dimensions are "nominal". Actual dimensions are smaller due to lumber industry standards. Cuts are actual length.

## Tools Used



Circular Saw



Orbital Sander

**Also Needed: Carpenter Square**



**Battery Tip:** A 4.0 Ah battery is recommended to be paired with high amp draw tools for maximum efficiency.

## Lumber Cut List

Board*	Description	Cut to	Qty
1x12x8	Stringer	9" run with 7" rise	2
1x10x8	Shelf	47"	4

\* Board dimensions are "nominal." Actual dimensions are smaller due to lumber industry standards. Cuts are actual length.

## Assembly Instructions

### Step 1

You will use your 1x12x8 board and make two staircase stringers. To do so, grab a carpentry square and place it on your 1x12x8 board with excess at the bottom. Place a 7" mark at one corner and a 9" mark at the other corner to make a triangle, and then trace your triangle.

### Step 2

Move your carpentry square up your board until the 7" edge reaches your mark from the 9". Line up your 7" and 9" markings with the edge of the board and trace an additional triangle. Repeat one more time for a total of 3.



## Step 3

At the edge of your board where each triangle marking ends, flip your carpentry square back into your drawings and trace that line.



## Step 4

Cut out your stringer.



## Step 5

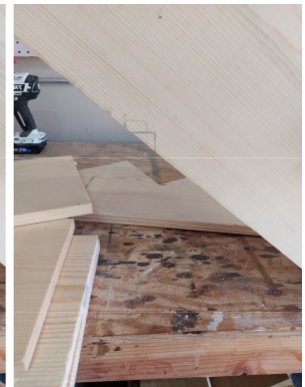
Trace the cut out stringer on the additional piece of 1x12, trace it, and cut out the second piece.

## Step 6

Cut 4 1x10x8 boards to 47".

## Step 7

Clamp the stringer to your workbench and trace a scrap piece of 1x10 standing up against your stringer where your boards will meet. It should be enough that the stringer can rest on the 1x10 board. Then, trace it.



## Step 8

Cut out this section.

## Step 9

Place the stringer on top of your second stringer, trace your cut out, and cut it out.

## Step 10

To stand up your board, place one 1x10x47" standing upright, and rest your stringers on it with the cut-out section on the back. Now lay your 3 1x10 shelves across.



## Step 11

Sand it down and add your finish.

